



Titan Newsletter

Overheard Lines from The Reliable Titan

*'The Bushfire Proof Titan is the Power Pole of the Century.
Titan Reliability is Guaranteed'*

Contents

- Q&A Opening
- Summer is Approaching – Who Is Prepared?
- Creating the Titan
- Titan Pre & Post Sales Support
- Comms Connect Success
- EECON2022 Conference Support & Wrap Up
- Industries now Covered by Titan
- Get a Better Feel for the Reliable Titan

Q&A Opening

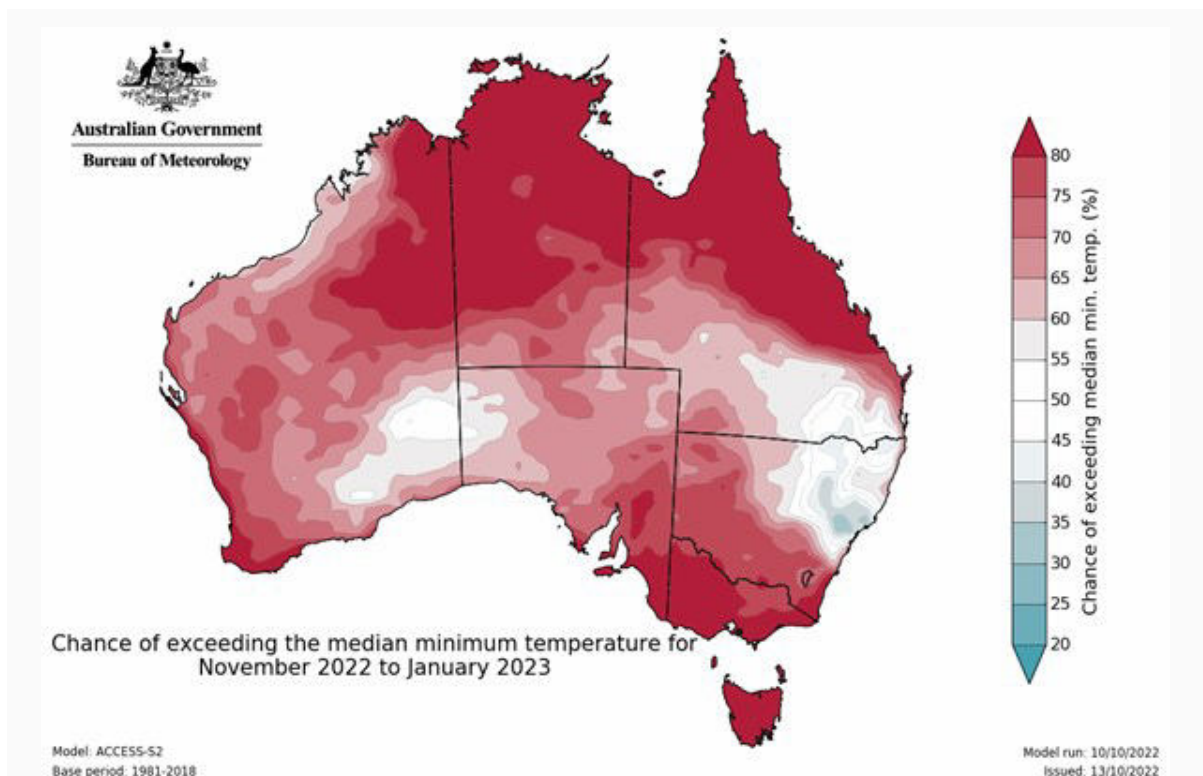
Dulhunty Poles are always open to any feedback, questions and or comments pertaining to the Titan Pole and associated products. Such feedback can be in the form of general enquires, or more specific discussion of the Titan's appropriateness for certain environments, or to analyse Titan's engineering features for specific construction situations. Any contact is welcome through the enquiries email : enquiries@dulhuntypoles.com

One of our team will respond as soon as possible to the individual email address provided. All your contact details and the related correspondence will be treated with the utmost privacy protection.

Summer is Approaching – Who is Prepared?

The Australian weather patters generally, produced a substantial increase in rainfall for most of 2022, with new maximum precipitation records established in several areas. Consequently, all vegetation loads have increased dramatically, especially in rural areas, and with the inevitable summer drying out process within view, a serious increase in bushfire danger for vegetated regions within Australia will surely result.

The Australian Bureau of Meteorology (BOM) produce many valuable, well researched predictions and the below appears pertinent to this likely 'tinder box' concern and the necessity to adequately prepare safeguards for overhead ESI infrastructure, especially those with pole type materials known to be very susceptible to bushfire attack.



The replacement of power poles destroyed through bushfires is a time consuming, expensive process for all involved; from the electricity network owner/supplier/retailer to the consumer and the community at large.

Preparation is the key.

This disaster just should not happen, when the Titan bushfire proof pole is readily available throughout the country. Accordingly, those electricity supply authorities who are currently utilising the reliable Titan, will be much more at ease during the next many months than those persisting with non-bushfire proof poles.

We applaud all existing Titan clients for their foresight and their responsible attitude towards the safe and efficient operation of their network and more importantly to the community - through installation of the only bushfire proof pole available in Australia. A Titan is installed for a lifetime!

Depending upon the severity of a bushfire, the conductors and associated fittings in some infrequent cases may also need replacing in the aftermath, but the most arduous, expensive and time-consuming part of the post fire restoration, is the sourcing and delivery to site, and installation of new replacement poles. This

outlay is eliminated with a Titan. Experienced operatives in this field have put the actual pole replacement at between 70% to 90% of the total cost in achieving restoration of supply.

Installing a Titan is the best form of preparation.

Creating the Titan

The Titan is a bushfire proof, innovative, engineered fibre cement pole and has been manufactured in Australia since 2010. The original design and product intent was for power poles and marine piles, given that's where the market demand and focus was at that time.

Our Titan product development is based on the Dulhunty Poles owned patents on materials and manufacturing process used to build the Titan and this methodology has since been successfully adapted to service other industry's needs.

Titan products are made principally with cement and calcined kaolin clay (Metakaolin), the most reactive Pozzolan, with continuous alkaline resistance fibreglass rovings providing the bi-directional strength. The Titans do not contain sand, metal, or stone, (or any other type of concrete aggregates), will not rust or spall and leakage currents are demonstrably less than for a spotted gum hardwood pole.

Consequently – the Titan pole is NOT A CONCRETE POLE!
The proper identifiable terminology for this pole is either just simply, TITAN POLE or TITAN FIBRE CEMENT POLE.



A scene from the Titan factory during the manufacturing process.

The Titan manufacturing process is governed by computer-controlled equipment. All pole designs are reviewed with validated testing, including Finite Element Analysis (FEA) of all new or modified designs. With such a process, programs are designed and locked in by our design engineers, eliminating any possible accidental and inappropriate human intervention in the manufacturing procedure. Titan pole material is wound on a mandrill, which is ideal in ensuring a geometrically controlled product internally every time – no matter the size and strength parameters required. This methodology boasts an indisputable quality-controlled system right throughout the manufacturing process.

As the term engineered fibre cement pole indicates, the Titan manufacturing process is unique in allowing a high degree of flexibility in design and many variations of diameter and ultimate strength can be considered. Most importantly, all Titan poles are designed for durability and strength by our team of experienced engineers.

Did You Know?

Each Titan has a unique Radio Frequency Identification Device (RFID) embedded in the pole during manufacture, thereby protected from the weather and fire. The RFID provides pole specific information for the network owner which can be downloaded to computer records.

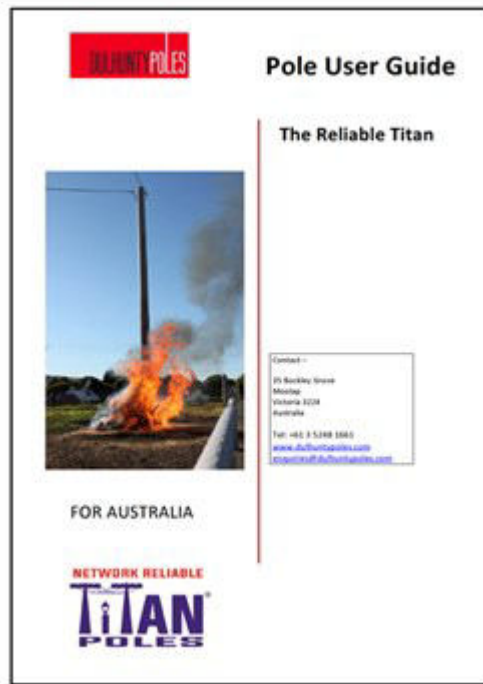
Titan Pre and Post Sales Support

When a valuable high-grade product like the Titan engineered fiber cement pole is manufactured, it demands an equally valuable pre and post-sales support foundation.

The pre sales support includes unlimited detailed discussion/consultation with our engineering representatives, either through a factory visit (recommended), or remote. Such collaboration could include our engineer's formal view of Titan's design parameters suitability for clients' requirements.

A Titan factory visit is open to interested persons to witness the complete Titan manufacturing process, pole dressing and handling systems and the valuable pole strength testing to destruction analysis. Other pertinent test results can be discussed, and historical results shown at any time.

The Titan after sales support includes a copy of the comprehensive Titan Poles User Guide.



This valuable document provides detailed coverage of many items, including the following -

- Handling requirements – covers shipping, storage, load/unload etc.
- Pole identification – ID name plate details & the Radio Frequency Identification Device
- Dressing & Attachment of Fittings. Specifically designed Titan fittings are available and include –

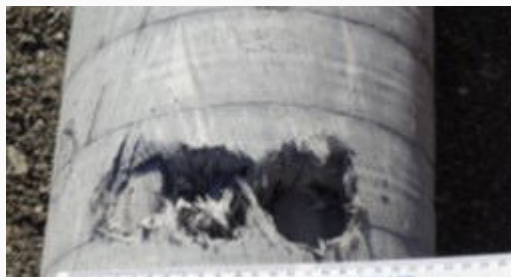
toggle bolts, pole steps, pole bands/collars, curved washers.





These fittings are supplied with new Titans as required by client's designed use and are also available when clients wish to add-on to existing in-service Titans.

- Installation – covers ideal slinging actions for one & multi part poles. Backfilling ideals.
- Repair of Damaged Poles – on rare occasions a Titan pole can be damaged through improper load/unloading actions, or large tree limbs blown onto in-service poles in severe windstorms. This Titan User Guide covers how to assess the damage, and if approved, carry out the repairs in the field.



This damage above was sustained prior to installation and was assessed as repairable without loss of pole strength, using the Titan method of repair as laid down in the Pole User Guide.

The User Guide is complete and very detailed, and above is but a sample of the information offered.

Did You Know?

The Titan engineered fibre cement pole, requires no ongoing remedial chemical treatment which means no ground contamination - ever

CommsConnect Success

Dulhunty Poles exhibited at the recent CommsConnect 2022 Conference and Expo in Melbourne. Our onsite expo staff reported a more than satisfactory interest from delegates in all our Titan products for use within the electronic communications industry. Particular attention was shown in the low cost long life, maintenance free aspect of the Titan fireproof pole, with several people looking to the Titan as an ideal standard pole product for upcoming specific projects, and into the future.

Several attendees mentioned the e-comms industry have been looking for an alternative pole for some time and the Titan's non-conductivity and being hollow for cables and equipment were also top appealing features.

Dulhunty Poles were extremely pleased with the feedback from the Telecommunication industry representatives.



The Titan Poles expo stand at CommsConnect ready for visitors

Our engineering and manufacturing staff would be delighted to discuss any such issues with the telecommunication industry at any time. Please contact us through enquiries@dulhuntypoles.com or 03 5248 1661.

EECON2022 Conference Support Wrap Up

Dulhunty Poles have long been a supporter for the Electricity Supply Industry, (ESI) and associated sectors throughout Australasia. Consequently, for the recent annual EECON2022 Conference hosted by the Electric Energy Society of Australia (EESA), we were delighted to provide sponsorship through the provision of conference pens and two fully serviced refreshment booths.



One of the two coffee booths complete with Titan cups and staff uniforms, provided by Titan Poles for the event

This year based in Brisbane, with the theme “*Our Energy Future – Unlocking Net Zero*” - this industry leading event focused on many pertinent issues with the future of utility assets and asset management, as well as customer-centric issues, being of particular interest to the Dulhunty Poles Titan team. With our environmentally sustainable, low carbon footprint Titan Pole, we are keen to continue to assist the ESI in these and other spaces.

Industries Now Covered by Titan

Dulhunty Poles have seen a substantial increase in interest in the Reliable Titan Pole over recent years – mainly for the Electricity Supply Industry (ESI).

However, we are also enjoying similar interest in other industries where the Titan is again starting to catch on. The secret to Titan’s success is down to the materials and manufacturing process used to build the Titan, making it a bushfire proof, rot, rust and termite proof pole. It follows, with our engineering design

fundamentals the same process can also produce structures for other industries, it does not have to always be a power pole.

Some other industries where the Titan is well suitable are indicated below –

- Electronic Communication, both large and small – Titan is ideal for many, many reasons.



Typical e-communication Equipment Pole installations

- Solar Farms – Titans are ideal for panel support structures with low cost whole of life (70-100 years) features and is not affected by weed suppression chemicals.



- Marine Environment – The Reliable Titan has proven itself in the marine world for many years as indicated below –



Wharf construction with Titan foundation piers.



Steel poles don't have to be in the salt water to corrode - ***close enough is bad enough*** for these water edge gal steel lighting poles above – won't happen with a Titan.

- Lighting – street/highway locations, industrial areas, security or sporting, Titan can provide a lifetime support structure.
- Security – communications & camera installations.
- Rural industries - the bushfire proof feature and the low cost, no chemical treatment whole of life quality, makes Titan more than ideal for the rural sector for various types of fencing, containment walls, drainage & reinforcement systems.



- Industrial shade coverage – Titan supports are ideal for covers over stock yards, feed lots, playgrounds and a range of commercial protective cropping sites etc.

We welcome other challenges to Titan utilization in this regard. Introducing a low-cost whole of life, long term structure into a business, is an ideal lifetime investment.

Get a Better Feel for the Reliable Titan

To get a better feel for the Titan, Dulhunty Poles offers free Titan samples as an attractive desk-top pen holder complete with a Dulhunty Poles pen and a Titan Poles carry bag. The Titan sample piece illustrates Titan's lightweight fireproof features, natural robust structure and ready drill-ability.



If interested in obtaining one, please simply reply to this email and provide your name and a postal address to receive your free sample.

